



# Midwest Prospect's Sioux Falls

## Showcase

## Results

June 7<sup>th</sup>, 2024

*Ian Jacobson*

## 60 Yard Dash Times

7.21, 7.25

### IF Velocity

64-67mph

### OF Velocity

-

### 1B - Velocity

-

### C - Velocity

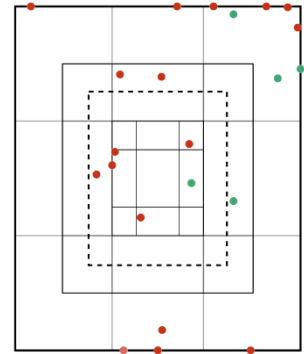
-

### C- Pop Times

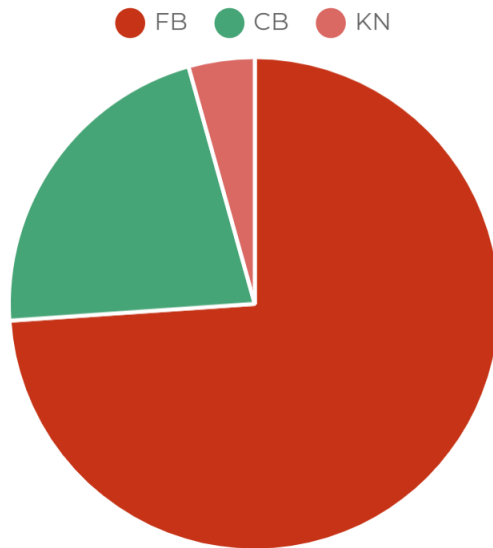
-

### DATA

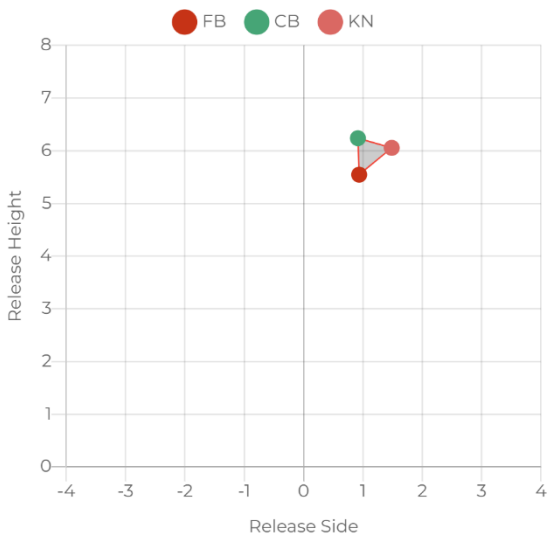
Pitch Type	Velo	Max. Velo	RPM	Max. RPM	V-Break	H-Break	Spin Eff.	Gyro Degree	Spin Dir.	Strike %	R. Angle	H. Angle	R. Height	R. Side
FB	73.2	75.5	1,989	2,103	12.5	9.0	84.7	32	00:59	33.3%	-0.1	-1.8	5.5	0.9
CB	65.9	66.8	1,416	1,487	-7.6	-1.9	56.9	55	06:09	20.0%	2.6	0.4	6.2	0.9
KN	60.9	60.9	-	0	0.0	0.0	-	-	-	0.0%	-3.5	-2.2	6.1	1.5



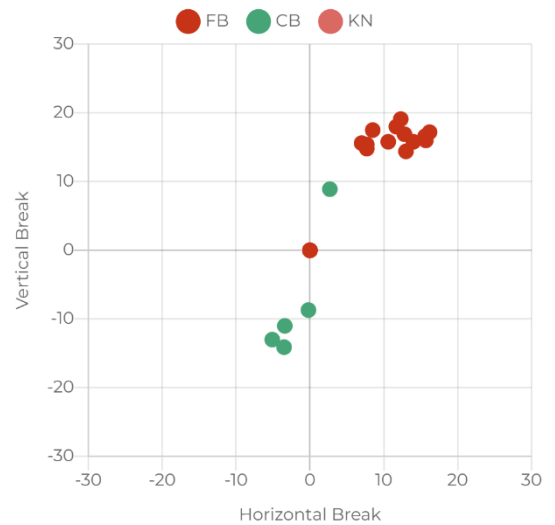
### PITCH TYPE %



### RELEASE AVERAGES



### BREAK PLOT

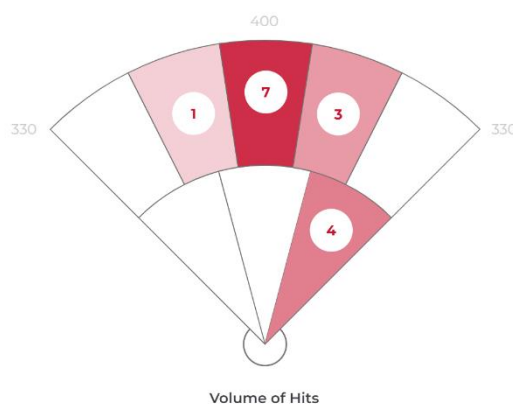


## DATA

	Avg	Max	Hard Hit Avg		
Exit Velocity	76.6	87.5	83.7	Batting Avg.	0.533
Launch Angle	13.4	49.3	12.9	xwOBA	0.411
Direction	6.8°R	41.1°R	18.8°R	Slugging	0.600
Distance	122	298	176	Hard Hit %	46.7%
Spin Rate	2,214	3,483	1,754	Bombs %	13.3%
				Ropes %	13.3%

## EXIT VELOCITY BY ZONE

	71.8 (1/15)	72.0 (1/15)	
84.7 (2/15)	81.5 (1/15)	71.5 (4/15)	
75.1 (1/15)	79.5 (4/15)		
	75.3 (1/15)		



## HIT VOLUME

Zone	Pull	Middle	Oppo
Volume of Hits	1/15	7/15	7/15
Avg. LA	27.0	30.0	12.0
Avg. EV	62.0	74.0	81.0
Avg. Spin	2,444	2,336	2,058
Avg. Distance	201	241	150

## HIT CLASSIFICATION

- Dribbler
- Ground Ball
- Low Line Drive
- High Line Drive
- Fly Ball



## HIT OUTCOMES

- Single
- Double
- Field Out

